

SPRING 2018 NEW PRODUCTS

1 OF 6



AF8219 air filter

Make	Model	Engine	Year
Ford	F250/F350 Super Duty	6.7LTD	2017-2018
Ford	F450/F550 Super Duty	6.7LTD	2017



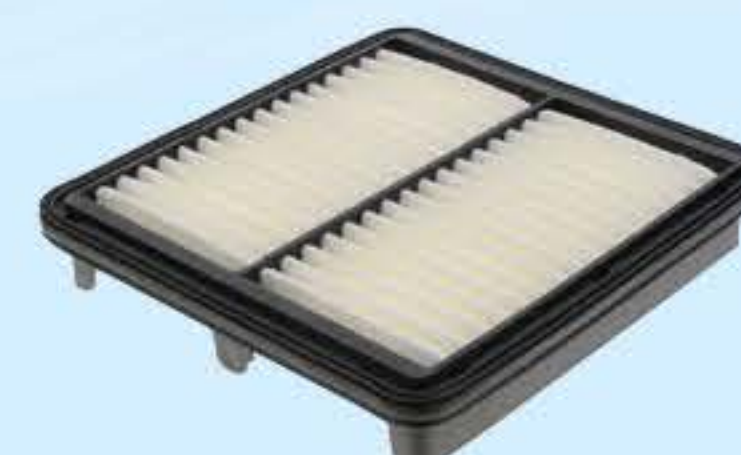
WAF5249 air filter

Make	Model	Engine	Year
Hyundai	Sonata	1.6LT/2.0LT	2015-2018
Kia	Optima	1.6LT/2.0LT	2016-2018



AF8220 air filter

Make	Model	Engine	Year
Ford	F250/F350 Super Duty	6.2L	2017-2018
Ford	F450 Super Duty	6.8L	2017



WAF5261 air filter

Make	Model	Engine	Year
Mazda	CX-3	2.0L	2016-2018



WAF3202 air filter (2 filters required for Cadillac ATS)

Make	Model	Engine	Year
Cadillac	ATS	3.6LT	2016-2018
Chevrolet	Cruze	1.4LT	2016-2018



WAF5263 air filter

Make	Model	Engine	Year
Honda	Civic	1.5LT	2016-2018
Honda	CR-V	1.5LT	2017-2018



WAF3227 air filter

Make	Model	Engine	Year
Chevrolet	Spark	1.4L	2016-2018



WAF5265 air filter

Make	Model	Engine	Year
Hyundai	Elantra	1.4LT/1.6LT/2.0L	2017-2018
Hyundai	Elantra GT	1.6LT/2.0L	2017-2018



Please Note: Application information listed is for general reference only. Please refer to respective application guides for specific vehicle application information.

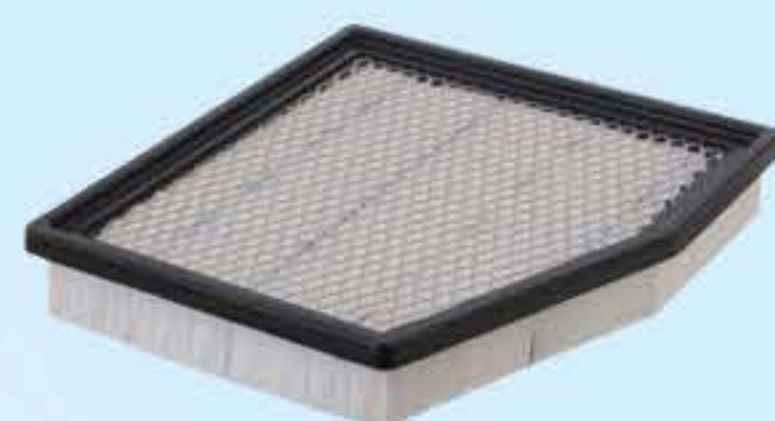
Tel: 1-800-461-0781

Fax: 1-800-511-6311

order@completelube.com

06MAR09|18SPRINGNP

SPRING 2018 NEW PRODUCTS


WAF5271 air filter

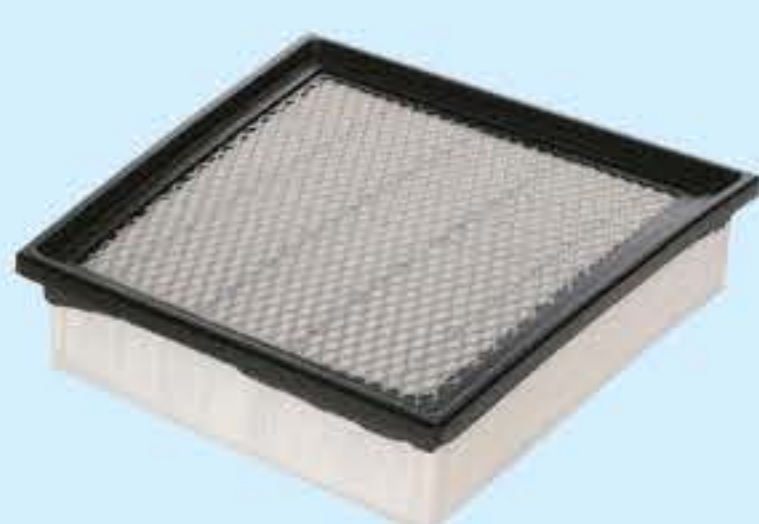
Make	Model	Engine	Year
Chrysler	Pacifica	3.6L	2017-2018


WPH2878 oil filter

Make	Model	Engine	Year
Toyota	Camry	2.5L	2018
Toyota	Camry Hybrid	2.5LGE	2018


WAF5274 air filter

Make	Model	Engine	Year
Nissan	Titan XD	5.6L	2016-2018
Nissan	NV2500/NV3500	5.6L	2018


WLA53231 air filter

Make	Model	Engine	Year
Chevrolet	Silverado 2500HD/3500HD	6.6LTD	2017-2018
GMC	Sierra 2500HD/3500HD	6.6LTD	2017-2018


CF9169 oil filter

Make	Model	Engine	Year
Audi	A6 Quattro	3.0LSC	2016-2018
Audi	A7 Quattro	3.0LSC	2016-2017
Audi	A8 Quattro	3.0LSC	2015-2017
Audi	Q7	3.0LSC	2017


59323 pcv valve (electric heated)

Make	Model	Engine	Year
Ford	Escape	3.0L	2009-2012
Ford	Explorer	4.0L	2004-2010
Ford	Explorer Sport Trac	4.0L	2007-2010
Ford	Explorer Sport Trac	4.6L	2007-2010
Ford	Edge	3.5L	2007
Ford	Ranger	3.0L	2004-2008
Ford	Ranger	4.0L	2007-2011
Ford	Freestar	3.9L	2004-2007
Ford	Freestar	4.2L	2004
Ford	Fusion	3.0L	2010-2012
Ford	Fusion	3.5L	2010-2012
Ford	Taurus	3.5L	2008-2010
Ford	Taurus X	3.5L	2008-2010
Ford	Mustang	4.6L	2002-2004
Lincoln	Aviator	4.6L	2003-2005
Lincoln	MKX	3.5L	2007
Lincoln	MKZ	3.5L	2007-2012



Some models with specific engine designations either come equipped with a conventional PCV valve or a PCV valve which incorporates an electric heating element. These should not be interchanged. Use the appropriate PCV valve for the vehicle being serviced. If equipped, the heated PCV valve for these applications is either located on the driver's side engine valve cover or rear engine valve cover. An engine dress cover may need to be removed to access the PCV valve.



"Tired of long order lead times and poor fill rates?"

Complete Lube Supply is a full line filter supplier. We stock a complete line of air filters and oil filters in our Ontario and Alberta distribution centres. With our quick order turn around we can cater to all of your product and shipping needs. Our business is Quick Lube. Call us for a **Filter Quik Quote** today.



Please Note: Application information listed is for general reference only. Please refer to respective application guides for specific vehicle application information.

Tel: 1-800-461-0781

Fax: 1-800-511-6311

order@completelube.com

SPRING 2018 NEW PRODUCTS

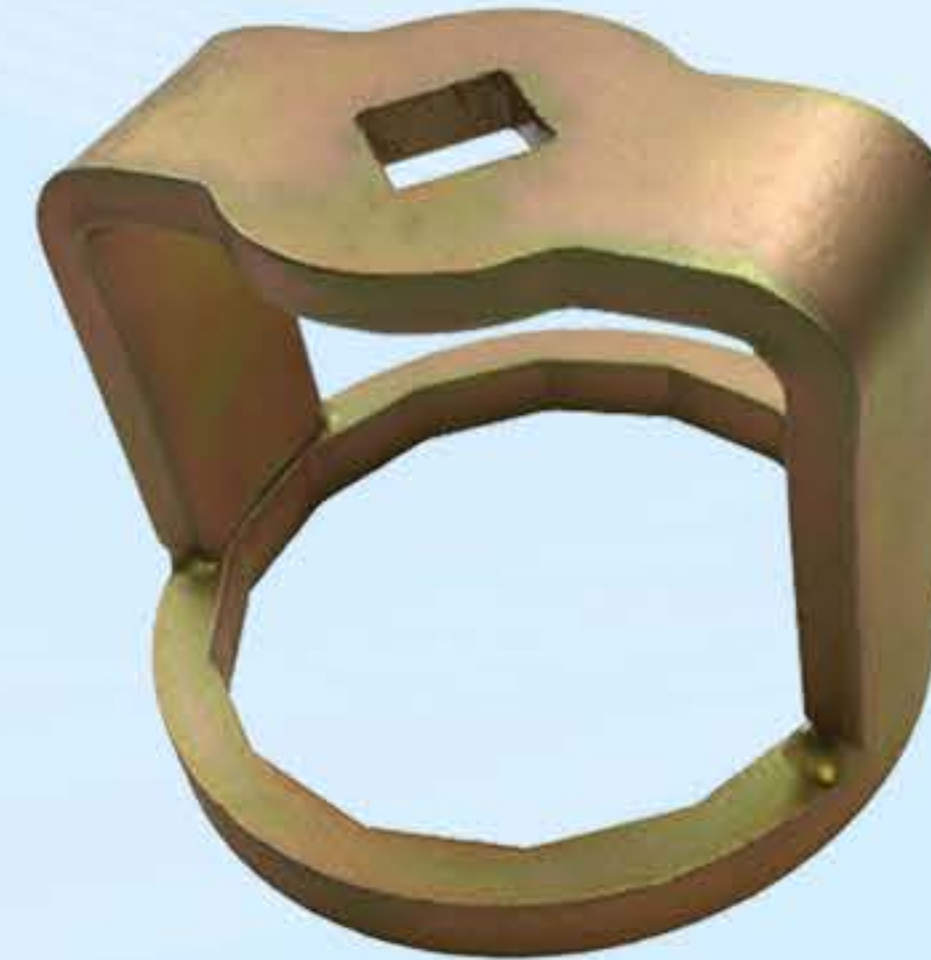
3 OF 6

TOYOTA OIL FILTER WRENCH

1726

- Services **ALL** Toyota and Lexus oil filter housing caps for 4, 6 & 8 cylinder engines
- Slim design reaches all caps (plastic and aluminum)
- Heavy-welded, thick, steel construction with precision fit and high torque capability
- 64mm x 14 point
- 1/2" drive

**Services All
Toyota/Lexus Oil
Filter Housing Caps**



FUEL & OIL FILTER HOUSING 32MM/36MM FLIP SOCKET

23236

- Designed for use on 32mm and 36mm oil and fuel filter housing caps
- Socket has 3/8" drive centre with 32mm on one end and 36mm on the other
- Durable, thick, cast construction

Oil Filter Housing Applications:
Audi/VW, BMW/Mini, Mercedes, Volvo
and GM vehicles
Fuel Filter Housing Applications:
Ford diesel 6.0L/6.4L/6.7L trucks
and GM 6.6L diesel trucks



CHRYSLER 3.6L OIL BYPASS VALVE REPAIR KIT

917-992

The original oil bypass valves located in the oil filter housings on early 3.6L Chrysler Penastar engines are prone to failing over time. When this happens, the plastic plunger breaks apart and releases the underlying spring. If left unremedied, this will cause improper oil filtration. Initially the only option was to replace the entire oil filter housing assembly when this occurred. With the 917-992 repair kit, only replace the broken components. The repair is quick and simple.

Applications:

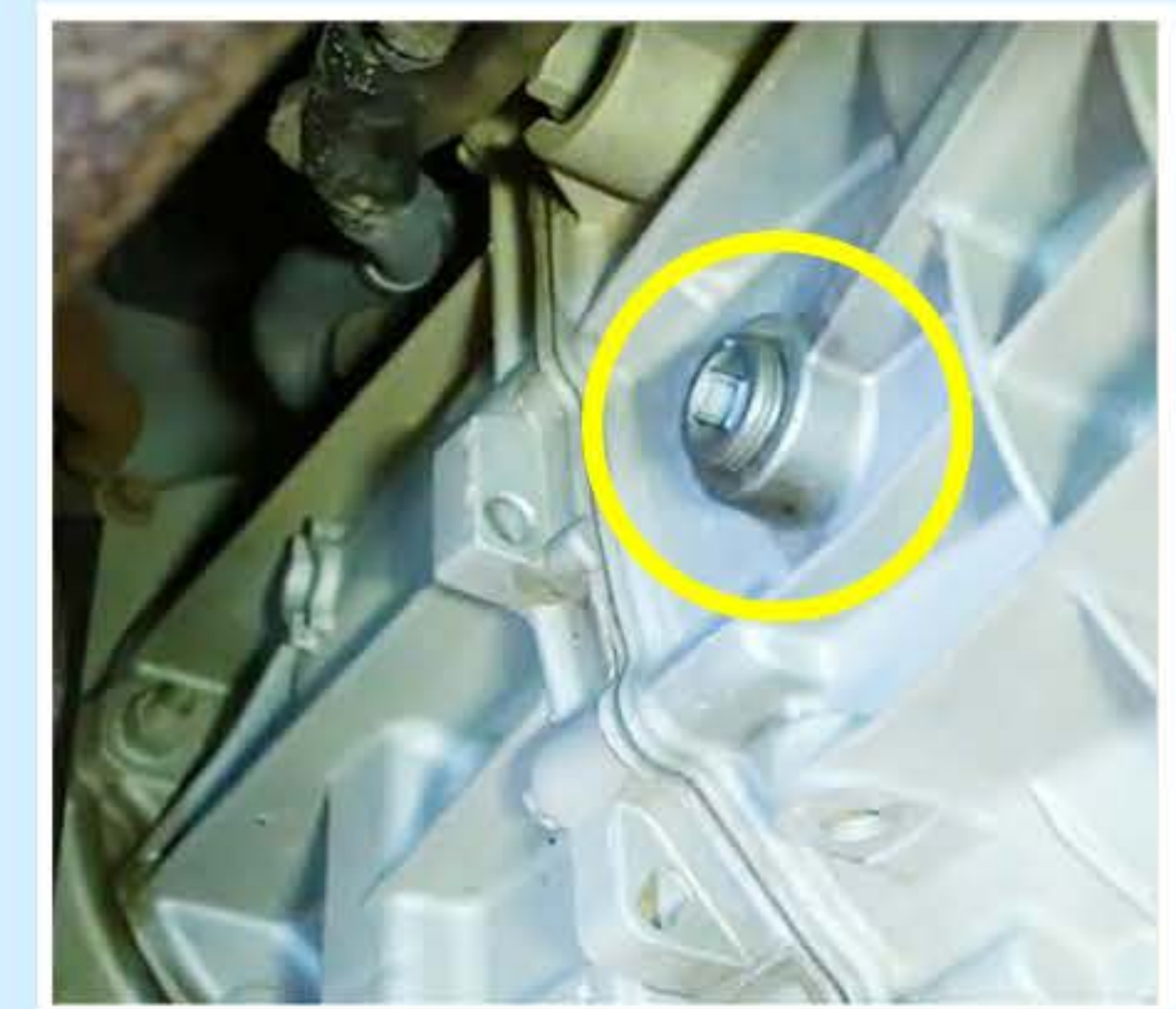
2011-2013 3.6L Chrysler 200, 300, Town & Country
2011-2013 3.6L Dodge Avenger, Challenger, Charger, Durango, Grand Caravan, Journey
2011-2013 3.6L Jeep Grand Cherokee, Wrangler
2012-2013 3.6L Ram 1500, C/V



JEEP WRANGLER 6-SPEED MANUAL TRANSMISSION SOCKET

1136

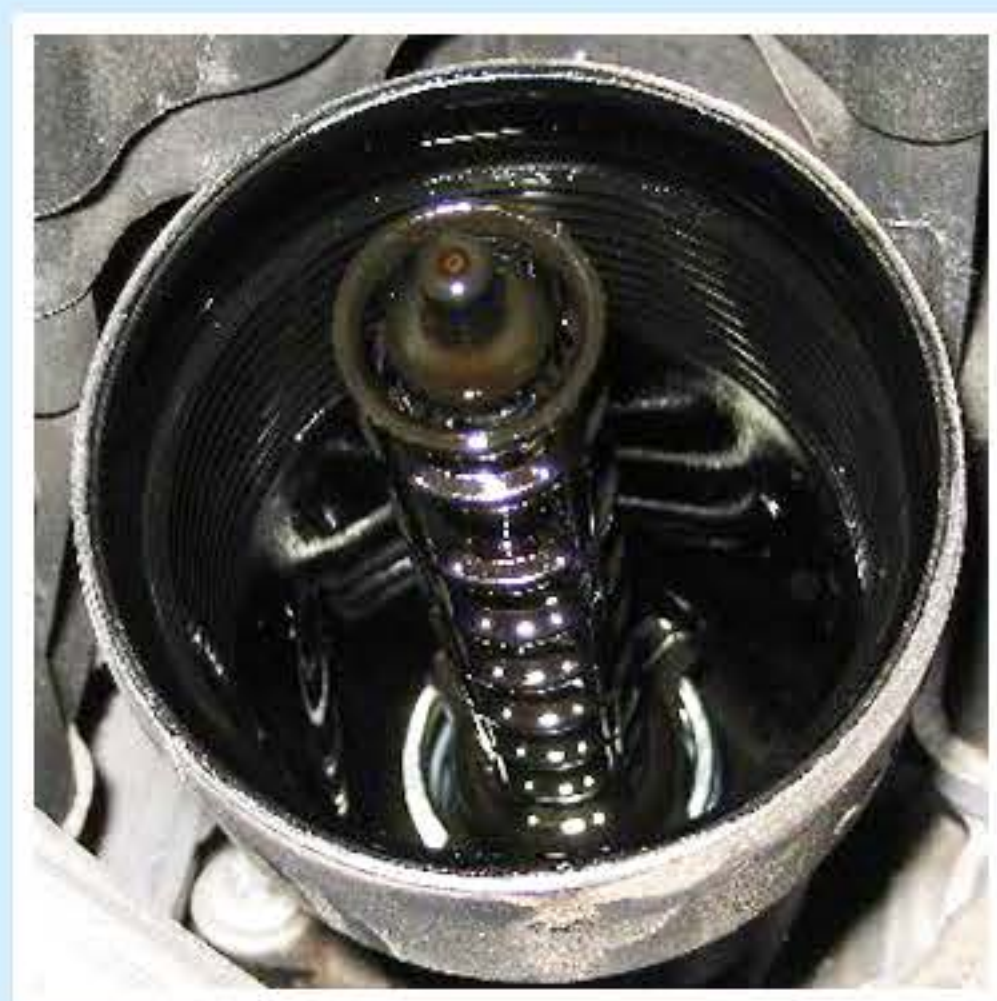
- Designed for use on transmission check plugs for 2012 and newer Jeep Wranglers with 6 speed NSG-370 manual transmissions
- Certain models have a clearance issue with access to the check plug
- Stubby 14mm hex with 3/4" hex drive
- Use with a 3/4" wrench
- 30mm (1.2") overall length



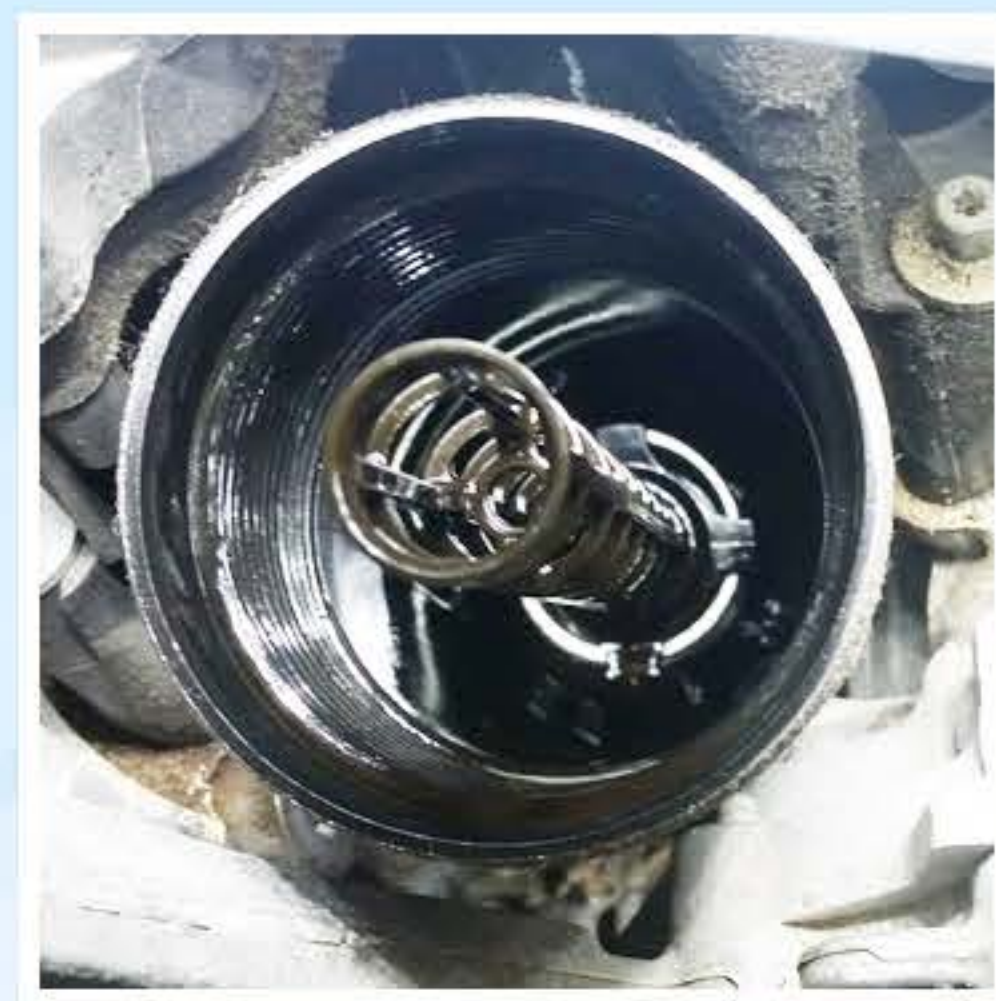
UNIVERSAL HOSE CLAMP PLIERS

4027

- 32mm x 19mm head with multi-directional slotted pattern for wide application range
- Use with flat band and ring clamps on radiator hose and transmission cooler lines
- Spring loaded jaw with locking mechanism opens up to 65mm
- Tool is 11-3/4" (28cm) long for extra reach
- Durable construction
- Cushioned grips



Oil Bypass Valve In Place



Failed Oil Bypass Valve



Broken Oil Bypass Valve
Components



Please Note: Application information listed is for general reference only. Please refer to respective application guides for specific vehicle application information.

Tel: 1-800-461-0781

Fax: 1-800-511-6311

order@completelube.com

06MAR09|18SPRINGNP

SPRING 2018 NEW PRODUCTS

TRIM CLIP PLIERS

- Pliers specifically designed with double-tapered tips to pry up on and easily slide under the trim clips for damage free removal
- Tips are angled 45° and 90° to provide better leverage for easier clip removal
- Work well in tight spots
- Handles wrapped with cushioned grips for comfort
- Use on clips attaching wheel well trim, engine cowl trim, lighting trim and interior panels

41080 - 45° Trim Clip Pliers

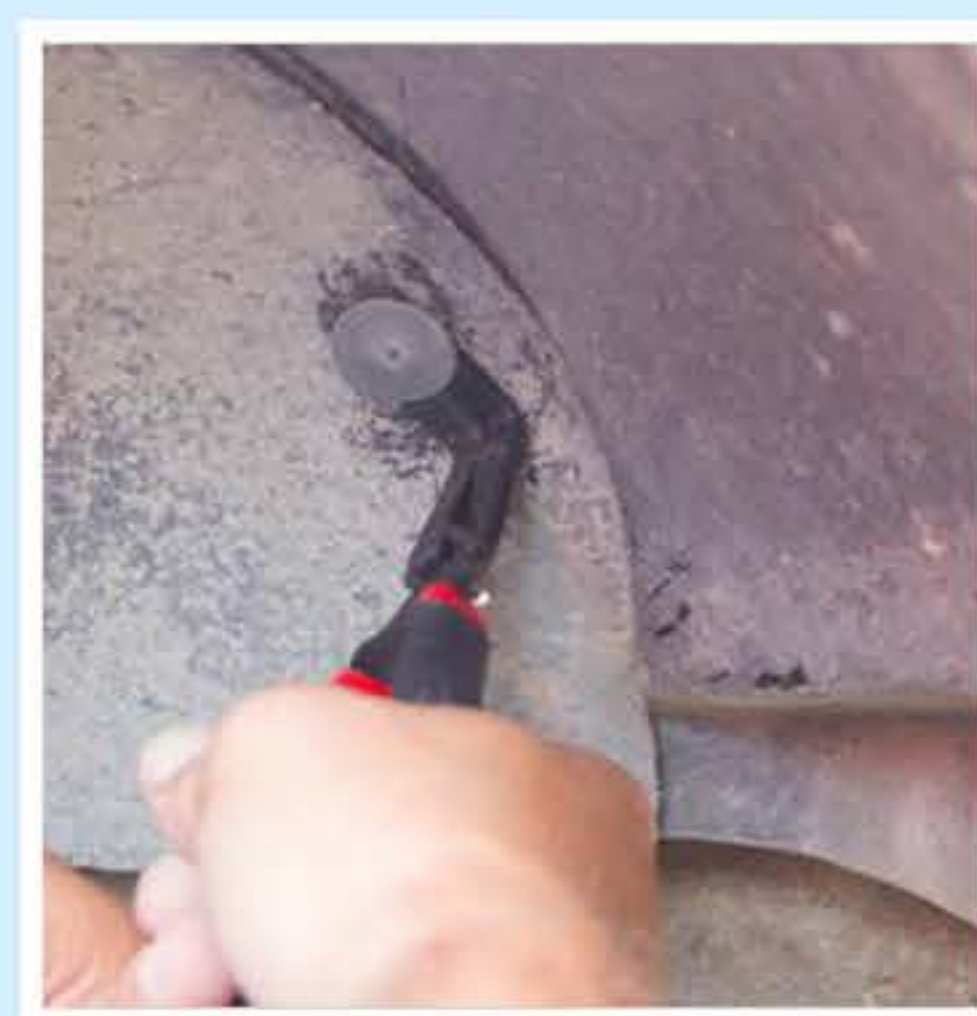
41090 - 90° Trim Clip Pliers



41080



41090



3/8" DRIVE STRAIGHT HEAD TORQUE WRENCH

8950

- 3/8" straight drive head
- Micro-adjustable, with bi-directional ratchet head
- Sliding collar for locking torque setting
- Sturdy construction with hardened steel, chrome plated tube
- Oil resistant, knurled handle for grip
- 10 - 100 ft/lbs. (16.9-138.9 Nm)
- 17-1/4" overall length (fully extended)

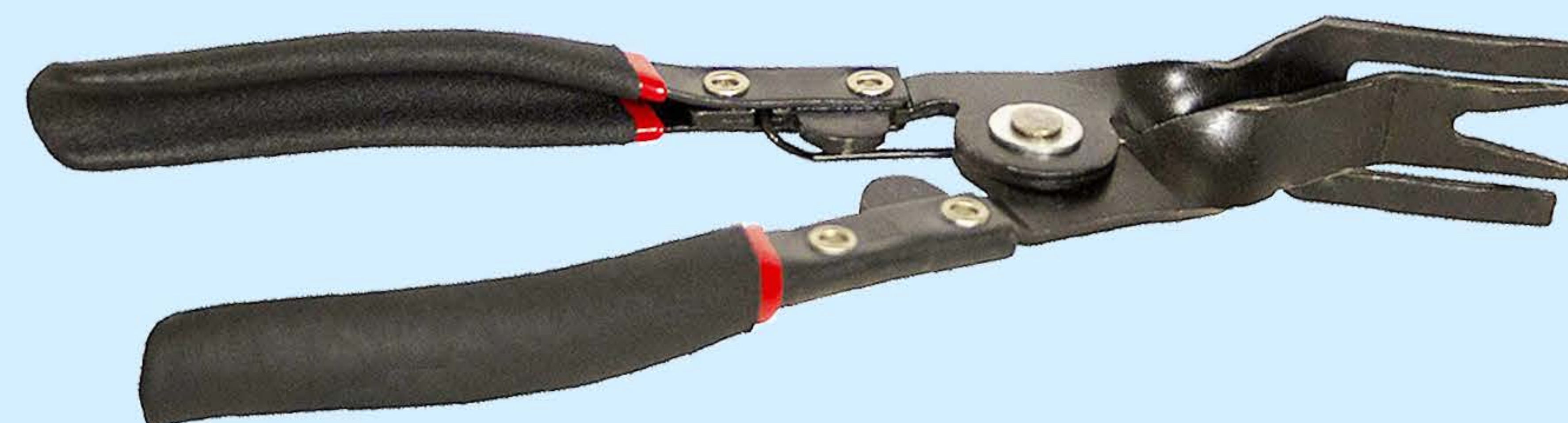
**Available
Once Again**



PANEL CLIP PLIERS

42480

- Spring loaded pliers provide extra leverage to remove push inclips and fasteners without damage
- Ergonomic, cushioned, spring-loaded handles provide leverage needed to easily remove plastic panel clips and fasteners
- Tapered forked end makes getting under panels and clips easier, helping prevent damage to the clips and panels
- Fork end designed to work on a wide range of clip sizes



OIL EATER PAIL PUMP KIT

RM10118

- Fits 18.9L Oil Eater pails
- Dispenses 1 oz. per stroke
- Avoid spilling and mismeasuring
- Will not rust
- 3 empty trigger spray bottles included with pump

**SPECIAL ONE TIME OFFER:
ORDER 3 PAILS & RECEIVE ONE RM10118
AT NO CHARGE
Conditions Apply**



Please Note: Application information listed is for general reference only. Please refer to respective application guides for specific vehicle application information.

Tel: 1-800-461-0781

Fax: 1-800-511-6311

order@completelube.com

06MAR09|18SPRINGNP

SPRING 2018 NEW PRODUCTS

5 OF 6

OBD2 CODE READER

OCT3209

- Colour LCD display
- Multi-function, diagnostic trouble code scan tool
- Reads and erases powertrain DTC commands and definitions for GM, Ford, Chrysler, Toyota, Honda, Nissan and Hyundai vehicles
- Airbag/SRS, ABS/brake service coverage
- Battery, charging system and alternator monitor
- Record/playback of live OBD2 data stream
- Live data with over 300 possible parameter identifications (PID)
- Full manufacturer specific code definitions
- Component locator function
- Review stored vehicle data
- AutoID upon plugging into vehicle
- Updateable with included update cable



SALT ELIMINATOR & NEUTRALIZER

27720

In provinces where salt is used on roads in the winter months, salt stains can build up on vehicle carpets and mats. Your customer can use Salt Eliminator & Neutralizer to help breakdown and remove salt buildup. (500mL/12)



Please Note: Application information listed is for general reference only. Please refer to respective application guides for specific vehicle application information.

Tel: 1-800-461-0781

Fax: 1-800-511-6311

order@completelube.com

TRICO REAR WIPER BLADES

- Often forgotten, always inspect rear wiper blades



PART# 8-A

Lexus CT200h 2017-2011

Scion xD 2014-2008

Toyota Prius C 2017-2012



PART# 10-A

Toyota Rav-4 2013-2018

Chevrolet Orlando 2012-2014



PART# 10-B

Honda HR-V 2018-2016

Infiniti QX56 2013-2011

Infiniti QX80 2017-2014

Mazda CX-3 2018-2016

Mitsubishi RVR 2017-2011

Nissan Leaf 2016-2011

Suzuki SX4 2013-2007

Suzuki SX4 Crossover 2012

TRICO

06MAR09|18SPRINGNP

SPRING 2018 NEW PRODUCTS

TRICO REAR WIPER BLADES



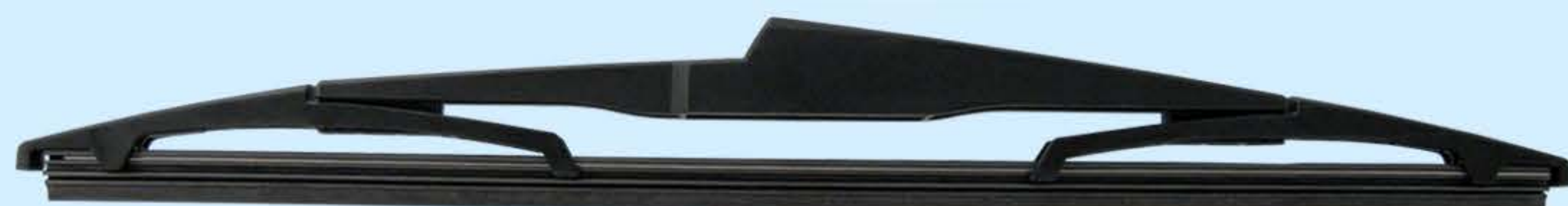
PART# 10-E

Chevrolet Sonic 2017-2012
Dodge Magnum 2008-2005
Dodge Nitro 2008-2007
GMC Acadia 2012-2007
Saturn Outlook 2010-2007



PART# 12-M

Ford Fiesta 2017-2011
Ford Focus 2017-2012
Saab 9-3 2011-2006
Saab 9-3X 2011-2010
Saab 9-5 2009-2006
Saturn Astra 2009-2008



PART# 12-K

Hyundai Elantra 2012-2009
Hyundai Santa Fe 2018-2013
Hyundai Santa Fe XL 2017-2013
Hyundai Tucson 2015-2010
Kia Sedona 2017-2015
Kia Sorento 2018-2016
Kia Sportage 2016-2011



PART# 15-I

Audi A4 2017-2011
Audi A4 allroad 2016-2013
Audi A4 Quattro 2017-2011
Audi allroad 2016-2013
Audi Q3 2016-2015
Audi Q3 Quattro 2016-2015
Audi Q7 2017-2015
Dodge Sprinter 2500 2009-2007
Dodge Sprinter 3500 2009-2007
Land Rover Range Rover 2016
Land Rover Range Rover Sport 2016
Mercedes-Benz Metris 2016
Mercedes-Benz Sprinter 2500 2016-2010
Mercedes-Benz Sprinter 3500 2016-2010
Porsche Cayenne 2016-2012
Porsche Macan 2016-2015
Porsche Panamera 2016-2014
Volkswagen Touareg 2016-2011



PART# 12-L

Toyota 4Runner 2016-2010

**OFTEN
FORGOTTEN**



Please Note: Application information listed is for general reference only. Please refer to respective application guides for specific vehicle application information.

Tel: 1-800-461-0781

Fax: 1-800-511-6311

order@completelube.com

TRICO®